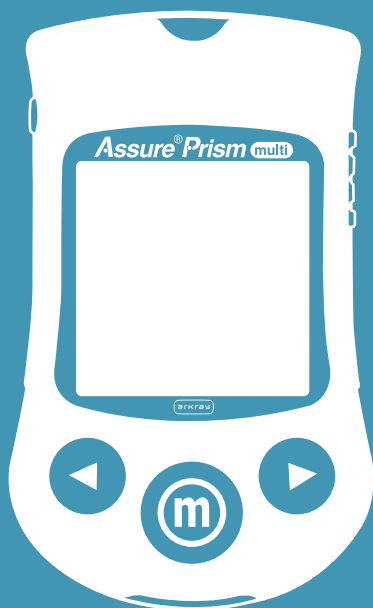


ASSURE[®] PRISM MULTI

+ BLOOD GLUCOSE MONITORING SYSTEM



Quality Assurance/Quality Control
(QA/QC) Reference Manual

ASSURE[®] PRISM MULTI

+ BLOOD GLUCOSE MONITORING SYSTEM

Quality Assurance/Quality Control (QA/QC) Reference Manual

Table of Contents

	Introduction	i
Section A	System Components	
	Assure® Prism multi Blood Glucose Meter.....	1
	Meter Display Screen	2
	Assure® Prism multi Blood Glucose Test Strips	3
	Assure® Prism Control Solution.....	4
	Meter Specifications	4
Section B	Meter Operation and Set-up	
	Meter Set-up.....	5
	Performing a Blood Glucose Test.....	7
	Performing a Control Solution Test	9
	Meter Memory	12
	Inserting or Replacing the Batteries	13
	Cleaning and Disinfecting the Meter	14
	Troubleshooting.....	16
	Assure® Prism multi Blood Glucose Test Strips Package Insert	18
	Assure® Prism Control Solution Package Insert.....	19
Section C	Regulatory Review and Guidelines for QA/QC Protocols	
	Regulatory Review and Guidelines for QA/QC Protocols	21
	Accuracy and Precision Studies.....	22
	Alternative Site Testing Evaluation	23
Section D	Addendums	
	Product Ordering	25
	Warranty	25
Section E	In-service Training	
	In-service Guide	27
	Competency Checklist.....	28
	Self-test	29
	Nurse In-service Training Record	32
	Certified Instructor Training Record	33
Section F	Quality Assurance/Quality Control Recording Forms	
	Meter Tracking Record	34
	Quality Control Record	35
	Field Inspection Report	36

Introduction

The Assure® Prism multi Blood Glucose Monitoring System is intended for the quantitative measurement of glucose in fresh capillary whole blood samples drawn from the fingertips and alternative sites such as the forearm, palm, thigh and calf.

Alternative site testing should be used only during steady-state blood glucose conditions. The system is intended for use outside the body (*in vitro*) and is intended for multiple-patient use in a professional healthcare setting, as an aid to monitor the effectiveness of diabetes control. This system is only to be used with an auto-disabling, single-use lancing device. It is not intended for use on neonates and is not intended for the diagnosis or screening of diabetes.

This comprehensive manual has been designed to be a thorough reference source for the Assure Prism multi Blood Glucose Monitoring System and includes:

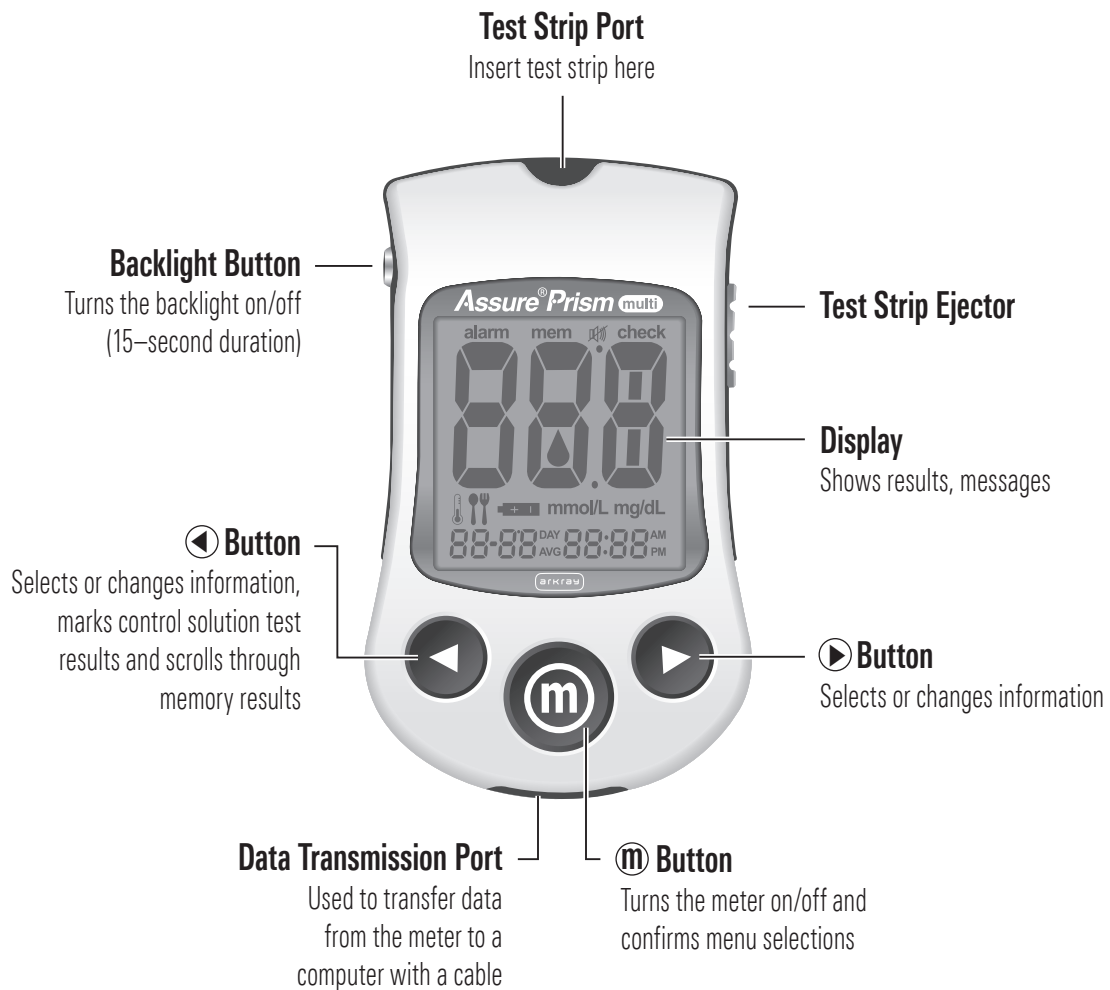
- Product operations
- Training and in-services
- Guidelines for policies and procedures
- Quality Assurance/Quality Control (QA/QC) programs
- Reviews of regulatory materials

All of these materials have been designed to assist you in meeting the necessary requirements for various certification programs and agencies.

We trust that this Quality Assurance/Quality Control manual will provide you with the needed support tools for your blood glucose monitoring program. If you have any questions after receiving the manual, please call ARKRAY's Customer Service Department at 800.818.8877, 24 hours a day, 7 days a week, USA and Canada.

System Components

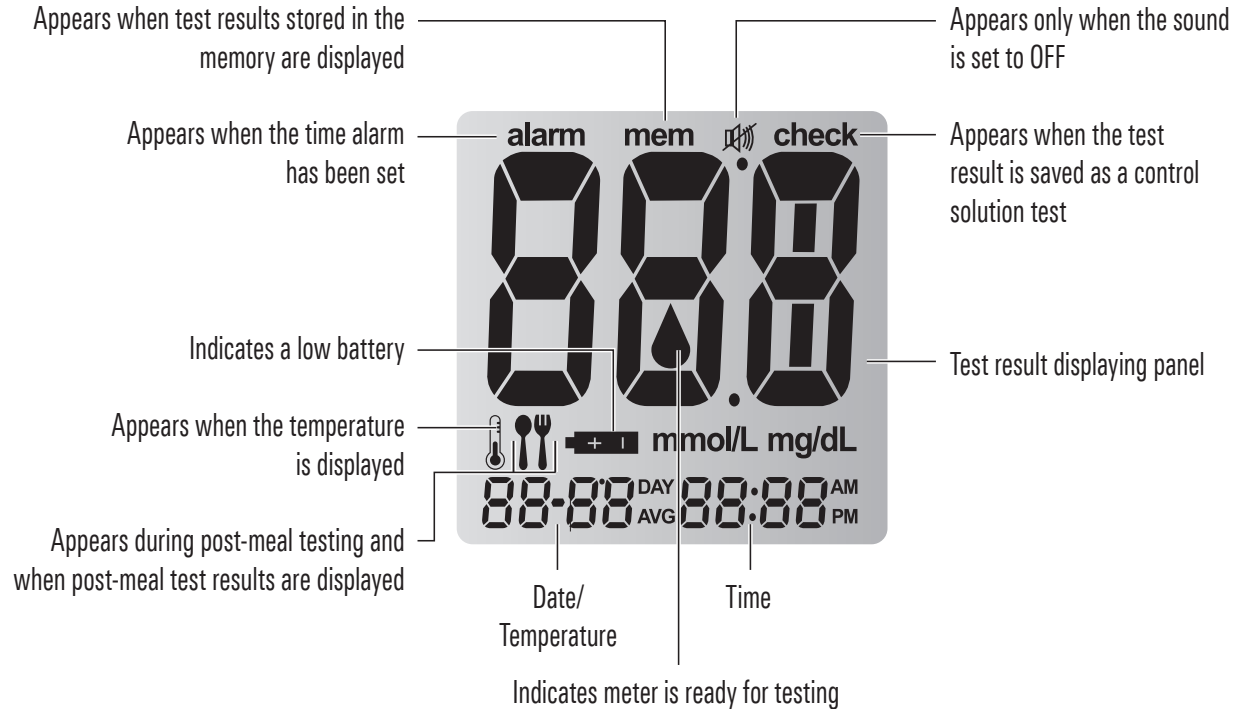
ASSURE PRISM MULTI BLOOD GLUCOSE METER



ORDERING DETAILS

ARKRAY Product Code # 530001 NDC # 08317-5300-01

METER DISPLAY SCREEN

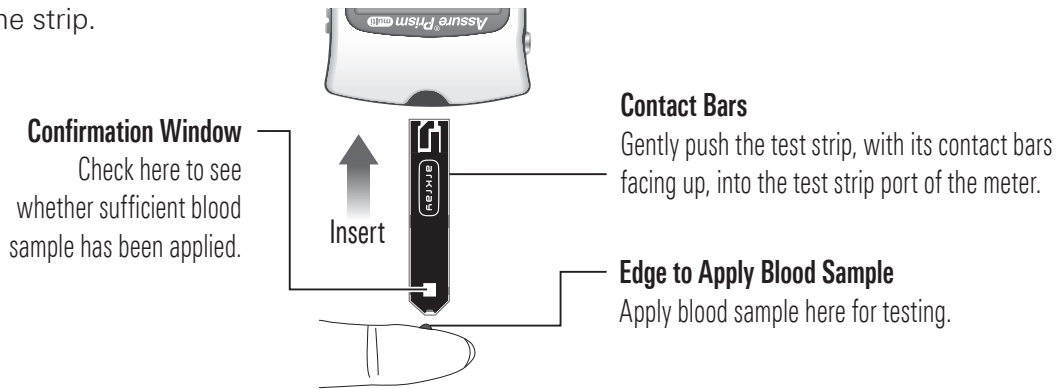


NOTE

- It is recommended to check if the display screen on the meter matches the illustration above every time the meter turns on. Do not use the meter if the display screen does not exactly match the illustration as the meter may show incorrect results.
- The unit of measurement for your Assure Prism® multi Blood Glucose Meter is preset and fixed in mg/dL.

ASSURE PRISM MULTI BLOOD GLUCOSE TEST STRIPS

The Assure Prism multi Blood Glucose Monitoring System measures blood glucose quickly and accurately. It automatically absorbs the small blood sample applied to the narrow edge of the strip.



SAFETY INSTRUCTIONS FOR USING TEST STRIPS

- All components that come into contact with blood samples should be considered biohazards capable of transmitting viral diseases between patients and healthcare professionals.
- Assure® Prism multi Blood Glucose Test Strips should be used only with fresh capillary whole blood samples.
- Do not reuse test strips.
- Do not use Assure Prism multi Blood Glucose Test Strips beyond the expiration date as this may cause inaccurate results.
- If the test strips are used and stored according to its storage and handling methods, test strips in new, unopened vials and open vials can be used up until the expiration date printed on the test strip box and vial label.
- Store test strips in a cool and dry place at a temperature of 34–86°F (1–30°C).
- Keep test strips away from direct sunlight or heat and do not freeze.
- Only store test strips in the original vial.
- Close the vial tightly after taking out a test strip and use the test strip immediately.
- Handle test strips with clean and dry hands.
- Do not bend, cut or alter test strips in any way.
- For detailed storage and usage information, refer to the Assure Prism multi Blood Glucose Test Strips package insert.
- Keep the meter and testing supplies away from young children.
- The test strip vial contains drying agents that are harmful if inhaled or swallowed, and may cause skin or eye irritation.

INDIVIDUALLY WRAPPED TEST STRIPS

When using the individually wrapped test strips:

- Check the expiration date on the rear side.
- Tear off the individual wrap on the notch, take the test strip out and use it immediately.

NOTE

- The control solution ranges for the individually wrapped test strips are printed on the test strip box.

Ordering Details		
Product Description	ARKRAY Product Code #	NDC #
Assure Prism multi Blood Glucose Test Strips 50 count	530050	08317-5300-50
Assure Prism multi Blood Glucose Test Strips 100 count	530100	08317-5301-01
Assure Prism multi Blood Glucose Test Strips Foil-wrapped 50 count	532050	08317-5320-50

ASSURE PRISM CONTROL SOLUTION



Assure Prism
Control Solution

Ordering Details

Product Description	ARKRAY Product Code #	NDC #
Assure® Prism Control Solutions Control 1 and 2	530006	08317-5300-06

METER SPECIFICATIONS

For additional information refer to the Assure Prism multi Blood Glucose Monitoring System User Manual.

Product Specifications	
Test strips	Assure Prism multi Blood Glucose Test Strips
Measurement range	20–600 mg/dL
Sample size	Minimum 0.5 µL
Test time	5 seconds
Sample type	Fresh capillary whole blood
Calibration	Plasma-equivalent
Assay method	Electrochemical
Battery life	1,000 tests
Power	Two 3.0 lithium batteries (disposable, type CR2032)
Memory	500 test results
Size	93 x 56 x 21 mm (3.66 x 2.20 x 0.83 in.)
Weight	59.6 g (2.10 oz) (with batteries)

Operating Ranges	
Temperature	50–104°F (10–40°C)
Relative humidity	10–90%
Hematocrit	20–60%
Altitude	10,000 ft (3,048 meters)
Unit of measurement	mg/dL

Meter Operation and Set-up

METER SET-UP

You should check and update the meter settings such as time and date before using your meter or after changing the meter batteries. Press and hold the **Ⓜ** button for 3 seconds to enter the SET mode. Whenever you want to complete the settings and exit from the SET mode, press and hold the **Ⓜ** button for 3 seconds again. Press **◀** or **▶** to reach the accurate value. Press and hold **◀** to scroll faster.

Adjusting the Date and Time

Step 1: Entering the SET Mode

Press and hold the **Ⓜ** button for 3 seconds. After all the segments flash across the screen, SET will be displayed on the screen. Press the **Ⓜ** button again to progress to the next step.



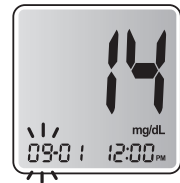
Step 2: Setting the Year

Press **◀** or **▶** until the correct year appears. Press and hold **◀** button to scroll through the numbers quickly. After setting the year, press the **Ⓜ** button to confirm your selection and progress to the next step.



Step 3: Setting the Month

A number indicating the month will be blinking on the left corner of the screen. Press **◀** or **▶** until the correct month appears. Press the **Ⓜ** button to confirm your selection and progress to the next step.



Step 4: Setting the Date

Press **◀** or **▶** until the screen displays the correct date. Press the **Ⓜ** button to confirm the date and progress to the next step.



Step 5: Setting the Time Format

The meter can be set in the AM/PM, 12-hour or the 24-hour clock format. Press **◀** or **▶** to select a format. The AM/PM is not displayed in the 24-hour format. After selecting the format, press the **Ⓜ** button to progress to the next step.



Step 6: Setting the Hour

Press **◀** or **▶** until the correct hour appears. After the hour is set, press the **Ⓜ** button to progress to the next step.



Step 7: Setting the Minute

Press **◀** or **▶** until the correct minute appears. After setting the minute, press the **Ⓜ** button to progress to the next step.



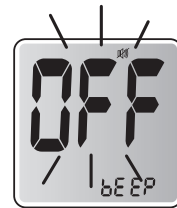
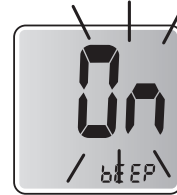
Step 8: Setting the Sound On/OFF


On pressing ◀ or ▶, the screen will display On or OFF. Press the ⊕ button to confirm the selection.

The meter will beep in the following instances if set to On:

- When you press the ⊕ button and/or ▶ button to turn on the meter or to set the alarm.
- When the test strip is inserted in the meter.
- When the blood or control solution sample is absorbed into the test strip and the test starts.
- When the test result is displayed.

If the sound is set to OFF, none of the sound functions will work.

**NOTE**

-  symbol is displayed only when the sound is set to OFF.
- At any stage, press the ⊕ button for 3 seconds to exit SET mode and turn off the meter.
- Press and hold ◀ button to quickly scroll through the numbers.

NOTE

- In a multi-patient setting, we do not recommend using the memory feature including post-meal alarms, pre-set blood glucose or averaging. Results stored in the memory are not related to a specific patient.

PERFORMING A BLOOD GLUCOSE TEST

CAUTION

Before performing a blood glucose test, observe the following safety precautions:

- All components that come into contact with blood samples should be considered to be biohazards capable of transmitting viral diseases between patients and healthcare professionals.
- Before testing each patient, a new pair of clean gloves should be worn by the user.
- Wash hands thoroughly with soap and water before putting on a new pair of gloves and performing the next patient test.
- Use only an auto-disabling, single-use lancing device for each patient.
- After use on each patient, the meter should be cleaned and disinfected. See the Cleaning and Disinfection section on page 14.

For more information, please refer to the following guidelines:

Preparing the Lancing Device

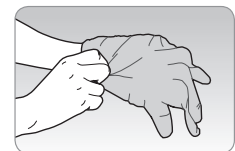
1. "Biosafety in Microbiological and Biomedical Laboratories (BMBL)", www.cdc.gov/biosafety/publications/bmbl5/
2. "Protection of Laboratory Workers From Occupationally Acquired Infections; Approved Guideline-Third Edition" Clinical and Laboratory Standards Institute (CLSI) M29-A3.

A lancing device is needed in order to collect a blood sample. Only an auto-disabling, single-use lancing device should be used. The auto-disabling, single-use lancing device can be purchased from your medical distributor or by telephone from the manufacturer.

Please read the instructions provided by the lancing device manufacturer before using the device.

Step 1

Wash hands and the sample site with soap and warm water. Rinse and dry thoroughly.

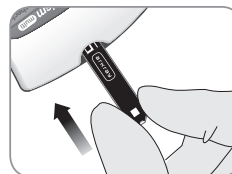



Wear appropriate protective gear such as disposable gloves.

Preparing the Meter and Test Strip

Step 2

With the contact bars facing up, insert a test strip into the meter's test strip port.



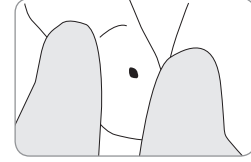
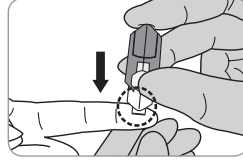
Push the strip gently into the strip port until the meter automatically turns on and the  symbol appears.



Applying the Blood Sample

Step 3

Obtain a blood sample using a lancing device. Place the lancing device against the sampling site in the direction of the arrow. The best puncture sites are areas on the middle or ring fingers. Remove the device from the finger.



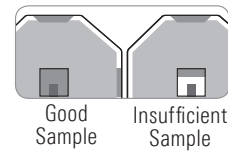
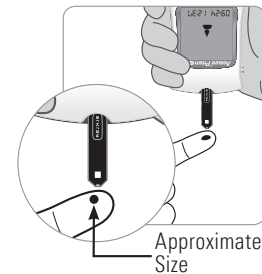
Wait a few seconds for a blood drop to form. A minimum volume of 0.5 microliter is needed to fill the confirmation window.

Step 4

After the ▲ symbol appears on the screen, apply the blood sample to the narrow end of the test strip until the meter beeps.

If the confirmation window is not filled in time because of abnormal viscosity or insufficient volume, an Er4 message may appear.

It is recommended that the application of the blood sample to the test strip be performed virtually vertical to the sample site as shown in the diagram.



NOTE

- The meter will switch off if the blood sample is not applied within 2 minutes of the ▲ symbol appearing on the screen. If the meter turns off, remove the strip, reinsert it, and start from Step 2.

Step 5

The test result will appear after the meter counts down from 5 to 1. The result will be automatically stored in the meter's memory.

Step 6

Slide the ejector button on the right side of the meter to safely discard used test strips in a disposable container.

If the test strip is removed, the meter will automatically turn off after 3 seconds.



Turning On the Backlight

When the meter is on, pressing the backlight button powers on the display backlight.

The backlight will turn off after 15 seconds or when you press the backlight button again.



PERFORMING A CONTROL SOLUTION TEST

You should check your meter and test strips using Assure Prism Control Solutions (Control 1 and 2). Assure Prism Control Solutions contain known amounts of glucose and are used to check that the meter and the test strips are working properly. The test strip vials have Assure Prism Control Solution ranges printed on the labels.* Compare the result displayed on the meter to the Assure Prism Control Solution range printed on the test strip vial or on the individually wrapped test strip box. Before using a new meter or a new vial/box of test strips, you should conduct a control solution test following the procedure with two different levels of solutions (Control 1 and 2).



* For the individually wrapped test strips, Assure Prism Control Solution ranges are printed on the boxes.

NOTE

- Use Assure Prism Control Solutions only.
- Check the expiration dates printed on the bottle. When you first open a control solution bottle, record the discard date (**date opened plus three [3] months**) in the space provided on the label.
- Make sure your meter, test strips and control solutions are at room temperature before testing. Control solution tests must be done at room temperature 68–77°F (20–25°C).
- Before using the control solution, shake the bottle, discard the first 1 or 2 drops and wipe the top of the control solution cap clean.
- Close the control solution bottle tightly and store at a temperature of 46–86°F (8–30°C).


You should do a control solution test:

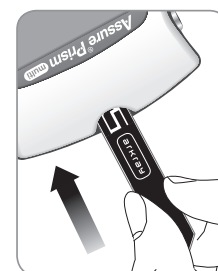
- To practice the test procedure using the control solution instead of blood.
- When using the meter for the first time.
- Whenever a new vial of test strips or box of individually wrapped test strips is opened.
- If the meter or test strips do not function properly.
- If the patient's symptoms are inconsistent with the blood glucose test result and you feel that the meter or test strips are not working properly.
- If the meter is dropped or damaged.

Assure Prism Control Solution Testing

Step 1

Insert a test strip into the meter's test strip port, with the contact bars facing upwards.

Gently push the test strip into the test strip port until the meter beeps. Be careful not to bend the strip while pushing it in. The  symbol will be displayed on the screen.



Step 2

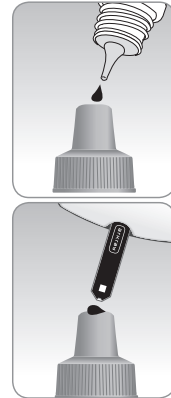
Shake the Assure Prism Control Solution bottle well before each test.

Step 3

Remove the cap and squeeze the bottle to discard the first 1 or 2 drops. Apply one drop of control solution to the top of the control solution cap.

Step 4

After the ▲ symbol appears on the display, apply the solution to the narrow edge of the test strip until the meter beeps. Make sure the confirmation window fills completely.

**NOTE**

- The meter will switch off if the control solution sample is not applied within 2 minutes of the ▲ symbol appearing on the screen. If the meter turns off, remove the strip, reinsert, and start from step 2.

Step 5

A test result will appear after the meter counts down from 5 to 1.

After your control solution result appears on the display, press ◀ for 3 seconds until "check" appears on the display.

When "check" is displayed, the result is stored in the meter's memory but it is not included in the averages.

Compare the result displayed on the meter to the range printed on the test strip vial or on the individually wrapped test strip box. If the result falls within the specified range, you are ready to use the meter and test strips to test with blood.

Step 6

Remove the used test strip from the meter's test strip port. The meter will turn off automatically. Used test strips should be safely discarded in disposable containers.

**CAUTION**

- The ranges printed on the test strip vial or on the individually wrapped test strip box are for the Assure Prism Control Solutions only. They do not have any connection to blood glucose level.

NOTE

- Assure Prism Control Solution can be purchased from your local supplier or pharmacy. If they do not stock it, contact ARKRAY Customer Service at 800.818.8877, 24 hours a day, 7 days a week, USA and Canada.

Comparing the Control Solution Test Results

The test result of each control solution test should be within the range printed on the label of the test strip vial or on the individually wrapped test strip box. Repeat the control solution test if the test result falls outside of this range. Out-of-range results may occur due to the following factors:

Situations	Actions
<ul style="list-style-type: none"> • When the control solution bottle was not shaken well. • When the meter, test strip or the control solution were exposed to high or low temperatures. • When the first drop of the control solution was not discarded or the top of the cap was not wiped clean. • When the meter is not functioning properly. 	Repeat the control solution test.
<ul style="list-style-type: none"> • When the control solution is past the expiration date printed on the bottle. • When the control solution is past its discard date (the date the bottle was opened plus three [3] months). • When the control solution is contaminated. 	Discard the used control solution and repeat the test using a new bottle of control solution.

If results continue to fall outside the range printed on the test strip vial or on the individually wrapped test strip box, the test strip and meter may not be working properly. Do not use your system and contact Customer Service at **800.818.8877**, 24 hours a day, 7 days a week, USA and Canada.

METER MEMORY

The Assure Prism multi Blood Glucose Meter can save up to 500 test results with time, date and temperature. If the memory is full, the oldest test result will be deleted and the latest test result will be stored.

NOTE

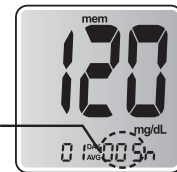
- In a multi-patient setting, we do not recommend using the memory feature including post-meal alarms, pre-set blood glucose or averaging. Results stored in the memory are not related to a specific patient.

Viewing Test Results

Step 1

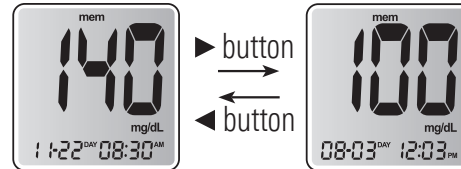
Press the ► or Ⓜ button to turn the meter on. The current date and time will be displayed on the bottom of the screen followed by the 1-day average value and the number of the test results saved within the current day.

The number of tests within the current day



Step 2

Use the ◀ button to scroll through the test results, starting from the most recent and ending with the oldest. The test date and the recorded temperature will display alternately.




Press the ► to return to the results seen previously.

After checking the stored test result, press the Ⓜ button to turn off the meter.

NOTE

- The control solution test results saved with the “check” symbol will be displayed with the “check” symbol when you review the stored test results.

INSERTING OR REPLACING THE BATTERIES

The Assure Prism multi Blood Glucose Meter uses two 3.0 V lithium batteries. Before using the meter, check the battery compartment and insert batteries if empty. When the  symbol appears on the display while the meter is in use, the batteries should be replaced as soon as possible. The test results may not be saved if the batteries run out.

Step 1

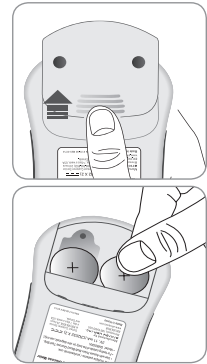
Make sure the meter is turned off. Push the cover in the direction of the arrow to open the battery compartment.

Step 2

To remove the used batteries, place your finger under each battery and pull upward. Insert two new batteries with the + side facing up and make sure the batteries are inserted firmly.

Step 3

Slide the cover back on the battery compartment. Push down until you hear the tab click into place.



NOTE

- Removing the meter batteries will not affect your stored results. You may, however, need to reset your meter settings.

CLEANING AND DISINFECTING THE METER

To minimize the risk of transmitting blood-borne pathogens, the cleaning and disinfection procedure should be performed as recommended in the instructions below.

The meter should be cleaned and disinfected after use on each patient. The Assure Prism multi Blood Glucose Monitoring System may only be used for testing multiple patients when standard precautions and the manufacturer's disinfection procedures are followed.

Cleaning and Disinfection

The **cleaning procedure** is needed to clean dirt, blood and other bodily fluids off the exterior of the meter before performing the disinfection procedure.

The **disinfection procedure** is needed to prevent the transmission of blood-borne pathogens.

A variety of the most commonly used EPA-registered wipes have been tested and approved for cleaning and disinfecting of the Assure Prism multi Blood Glucose Monitoring System.

The disinfectant wipes listed below have been shown to be safe for use with this meter.

Please read the manufacturer's instructions before using their wipes on the meter.

Manufacturer	Disinfectant Brand Name	EPA #
Clorox® Professional Products Company	Clorox® Germicidal Wipes	67619-12
	Dispatch® Hospital Cleaner Disinfectant Towels and Bleach	56392-7
Professional Disposables International, Inc. (PDI)	PDI® Super Sani-Cloth® Germicidal Disposable Wipe	9480-4
Metrex® Research	CaviWipes1™	46781-13

- A list of Environmental Protection Agency (EPA) registered disinfectants effective against HIV, hepatitis B and hepatitis C viruses can be found at the following website:

www.epa.gov/oppad001/list_d_hepatitisbhiv.pdf

Go to **www.arkrayusa.com/diabetes-management/disinfect** for the most up-to-date information on approved cleaning and disinfecting procedures and materials for ARKRAY meters. If you have any questions, please contact our Technical Customer Service department at **800.818.8877**, 24 hours a day, 7 days a week, USA and Canada.

Cleaning and Disinfecting Procedures

NOTE

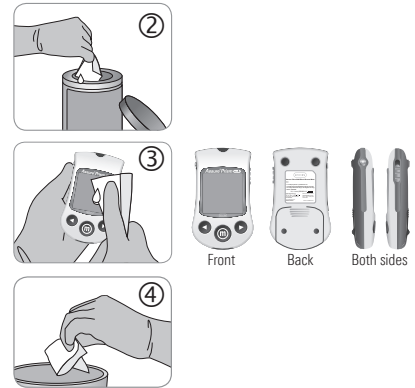
- Do not get fluids inside the meter through the test strip port, data port or battery compartment.
- Never immerse the meter or hold it under running water because it will damage the meter.
- Two disposable wipes will be needed for each cleaning and disinfecting procedure; one wipe for cleaning and a second wipe for disinfecting.

More information is available at:

- www.cms.gov/Regulations-and-Guidance/Guidance/Transmittals/index.html
- www.cdc.gov/injectionsafety/blood-glucose-monitoring.html
- www.fda.gov/MedicalDevices/Safety/AlertsandNotices/ucm224025.htm
- www.cdc.gov/injectionsafety/Fingerstick-DevicesBGM.html

Cleaning

- Step 1:** Wear appropriate protective gear such as disposable gloves.
- Step 2:** Open the towelette container and pull out 1 towelette and close the lid.
- Step 3:** Wipe the entire surface of the meter 3 times horizontally and 3 times vertically using 1 towelette to clean blood and other body fluids.
- Step 4:** Dispose of the used towelette in a trash bin.

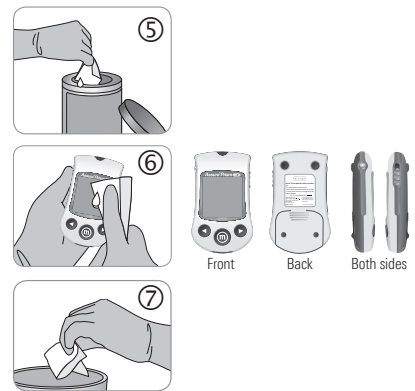


NOTE

- No actual drying of the meter is necessary before starting the disinfecting procedure.

Disinfecting (The meter should be cleaned prior to disinfection.)

- Step 5:** Open the towelette container and pull out 1 towelette and close the lid.
- Step 6:** Wipe the entire surface of the meter 3 times horizontally and 3 times vertically to remove blood-borne pathogens.
- Step 7:** Dispose of the used towelette in a trash bin.
- Step 8:** Allow exteriors to remain wet for the appropriate contact time and then wipe the meter using a dry cloth.



Disinfectant Brand Name	Contact Time
Clorox Germicidal Wipes	1 minute
Dispatch Hospital Cleaner Disinfectant Towels and Bleach	1 minute
Super Sani-Cloth Germicidal Disposable Wipe	2 minutes
CaviWipes1	2 minutes



- Step 9:** After disinfection, the user's gloves should be removed and thrown away. Wash hands before proceeding to the next patient.



If any of the following deterioration signs appear after cleaning or disinfecting, please stop using the system and contact Customer Service at 800.818.8877, 24 hours a day, 7 days a week, USA and Canada.

- When the inscriptions on the exterior of the meter have been removed.
- When the color of the meter has changed or faded.
- When cracks or roughness develop on the meter.
- When a part of the segment on the meter display does not flash.

TROUBLESHOOTING

Display Screen Messages

Please read this section first. If you still have questions, call Customer Service at 800.818.8877, 24 hours a day, 7 days a week, USA and Canada only. If outside of the USA or Canada, contact your local ARKRAY distributor. Contact your healthcare professional if you cannot reach Customer Service. Do not send your meter to ARKRAY or your local dealer without first calling to get approval to do so.

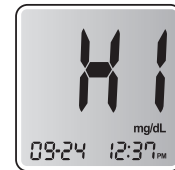
HI and Lo Messages

The meter displays results between 20–600 mg/dL.

HI Message

“HI” appears when the blood glucose level is greater than 600 mg/dL and indicates severe hyperglycemia (much higher than normal glucose levels).

If “HI” is displayed again upon retesting, please contact the patient’s healthcare provider immediately.



Lo Message

“Lo” appears when a test result is less than 20 mg/dL and indicates severe hypoglycemia (very low glucose levels).

If “Lo” is displayed again upon retesting, please contact the patient’s healthcare provider immediately.



NOTE

- If messages for hyperglycemia or hypoglycemia are displayed, even if the patient does not have those conditions, please contact Customer Service at **800.818.8877**, 24 hours a day, 7 days a week, USA and Canada.

Error Messages

Er1: A used test strip was inserted.

Repeat the test with a new test strip.



Er2: The blood or control solution sample was applied before the ▲ symbol appeared.

Repeat the test with a new test strip and wait until the ▲ symbol appears before applying the blood or control solution sample.



Er4: The blood sample has abnormally high viscosity or insufficient volume. Repeat the test with a new test strip.



Er5: This error message may appear when the wrong blood glucose test strip is used instead of an Assure Prism multi Blood Glucose Test Strip.

Repeat the test with an Assure Prism multi Blood Glucose Test Strip.



Er6: There is a problem with the meter.

Do not use the meter. Contact Customer Service at **800.818.8877**, 24 hours a day, 7 days a week, USA and Canada.




HiF: The temperature during the test was above the operating range.

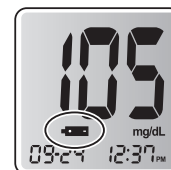
Move to an area where the temperature is within the operating range (50–104°F/10–40°C) and repeat the test after the meter and test strips have reached a temperature within the operating range.

**LoF: The temperature during the test was below the operating range.**

Move to an area where the temperature is within the operating range (50–104°F/10–40°C) and repeat the test after the meter and test strips have reached a temperature within the operating range.

**Low batteries.**

If the  symbol appears on the display while the meter is in use, the batteries should be replaced as soon as possible. The test results may not be saved if the batteries run out.

**NOTE**

- If the error messages persist, please contact Customer Service at **800.818.8877**, 24 hours a day, 7 days a week, USA and Canada.

General Troubleshooting

Problem	Troubleshooting
The display is blank even after inserting a test strip.	<ul style="list-style-type: none"> • Check whether the test strip is inserted with the contact bars facing up. • Check if the strip has been inserted completely into the test strip port. • Check if the appropriate test strip was used. • Check if the batteries are inserted with the "+" side facing up. • Replace the batteries.
The test does not start even after applying the blood sample on the strip.	<ul style="list-style-type: none"> • Check if the confirmation window is filled completely. • Repeat the test after inserting a new test strip.
The patient's test result does not match their symptoms.	<ul style="list-style-type: none"> • Repeat the test after inserting a new test strip. • Check the expiration date of the test strip. • Perform control solution test.

NOTE

- If the problem is not resolved, please contact Customer Service at **800.818.8877**, 24 hours a day, 7 days a week, USA and Canada.

Assure® Prism multi Blood Glucose Test Strips

IMPORTANT

Please read this information and the User's Manual of your meter before using the Assure® Prism multi Blood Glucose Test Strips.

INTENDED USE

The Assure® Prism multi Blood Glucose Test Strips are for use with the Assure® Prism multi Blood Glucose Meter to quantitatively measure glucose in fresh capillary blood. The blood samples drawn from the finger should be used only during steady-state blood glucose conditions. The Assure® Prism multi Blood Glucose Monitoring System is intended for use outside the body (in vitro diagnostic use) and is intended for multiple-patient use in professional healthcare settings as an aid to monitor the effectiveness of diabetes control. The system is only used with auto-disabling, single-use lancet devices. It is not intended for use on neonates and are not for the diagnosis or screening of diabetes.

TEST PRINCIPLE

The glucose in the blood sample mixes with special chemicals on the test strip to produce a small electrical current. The meter converts this electrical current to glucose concentration.

STORAGE AND HANDLING

- Store unused test strips only in their original vial/box.
- Store strips in a cool and dry place between 34°F-86°F (1°C-30°C).
- Keep the strips away from direct sunlight and heat.
- Do not freeze test strips.
- Close vial cap tightly immediately after taking out a test strip.
- Use the test strip immediately after taking it out of the vial/individual wrap.
- Handle test strips only with clean, dry hands.
- Do not bend, cut, or alter the test strips in any way.
- Do not force a test strip into the meter. Gently push it into the meter's test strip port.
- Apply only fresh capillary whole blood to the test strip.
- Use all of the test strips within the expiration date printed on the test strip box and vial label.
- Do not use the expired test strips and dispose the expired test strips immediately because using test strips past the expiration dates can produce incorrect results.
- The test strips are sealed and stored according to its storage and handling methods. Test strips in need of repair should be discarded. Do not attempt to repair or reuse individual, individually wrapped test strips can be used until the expiration date printed on the test strip box and vial label.

WARNINGS AND PRECAUTIONS

- Alternative site and fingertip results may differ significantly due to rapid changes in the glucose level after meals or exercise, hypoglycemic symptoms, or effects of drugs such as insulin. A1C testing should only be conducted under steady-state blood glucose conditions. Use a fingertip sample if you suffer from hypoglycemia or have experienced hypoglycemic shock or symptoms.
- Test strips are for single use only. Do not reuse.
- If the test strip does not absorb the blood sample properly, please contact Customer Service at 800.818.8877, 24 hours a day, 7 days a week, USA and Canada.

BLOOD SAMPLE COLLECTION PROCEDURE

Wash hands and sample site with soap and warm water. Rinse and dry thoroughly before collecting the blood sample with a lancet device. Wear appropriate protective gears such as disposable gloves.

Fingertip Site Blood Sampling

Press the lancet device against the side of your fingertip. Press the release button. Massage the fingertip to obtain a round drop (at least 0.5 µL) of blood. Apply test strip to blood sample.

Alternative Site Blood Sampling (forearm, palm, thigh, calf)

Select a clean, soft and fleshy sample site free of visible veins and hair and away from bones. Gently massage the sample site to increase blood circulation to minimize differences between fingertip and alternative site test results. Place auto-disabling, single-use lancet device against the sample site. Press the release button. Massage the site to obtain a round drop (at least 0.5 µL) of blood. Apply test strip tip to blood sample.

CAUTION

- Alternative site and fingertip results may differ significantly due to rapid changes in the glucose level after meals or exercise, hypoglycemic symptoms, or effects of drugs such as insulin. Use a fingertip sample if you suffer from hypoglycemia or have experienced hypoglycemic shock or symptoms.
- A1C results should never be used to calibrate Continuous Glucose Monitoring Systems or entered into an insulin dosing calculator or pump for dosing recommendations.
- For more information on alternative sites, please refer to the A1C section of the User's Manual for your meter.

CAUTION: To reduce the chance of infection

- All components that come into contact with blood samples should be considered to be biohazards capable of transmitting viral diseases between patients and healthcare professionals.
- Only an auto-disabling, single-use lancet device should be used for each patient.
- The meter should be disinfected after use on each patient. This blood glucose monitoring system may only be used for testing multiple patients when Standard Precautions and the pre-cleaning and disinfection procedures as recommended in the User's Manual that came with your system are followed.
- For more information on infection control, please refer to <http://www.fda.gov/MedicalDevices/Safety/Alerts/Recalls/ucm224253.htm> or to CDC: <http://www.cdc.gov/infectioncontrol/evidencebasedinfectioncontrol/>

TEST PROCEDURE

- 1) Wash hands and sample site with soap and warm water. Rinse and dry thoroughly. Wear appropriate protective gears such as disposable gloves.
- 2) Insert the test strip into the meter's test strip port with the contact bars facing up. Push the strip in gently into the strip port until the power automatically turns on.
- 3) The ▲ symbol will appear.
- 4) Use a lancet device to get blood sample. The sample must be at least 0.5 µL to fill the test strip reaction cell. When the ▲ symbol appears on the display, apply the blood sample to the edge of the narrow end of the test strip until the meter beeps. If the confirmation window is not filled completely, an "Err" message will appear.
- 5) Meter will read "down" from 5 to 1 on the display. The test result, time, and date will appear and automatically store in the meter memory. Remove the used test strip from the test strip port. The meter will turn off after 3 seconds.

TEST RESULTS

The Assure® Prism multi blood glucose meter will display results between 20 and 600 mg/dL.

Normal Blood Glucose Results

The range of a normal fasting blood glucose level for non-diabetic adults is between 70 and 99 mg/dL. Two (2) hours after a meal, the range of a normal blood glucose level for non-diabetic adults is less than 140 mg/dL.*

*Fasting is defined as no caloric intake for at least eight (8) hours.

Unexpected Results

Low or high blood glucose readings can indicate a potentially serious medical condition. If your low or high reading is inconsistent with your symptoms or your result is less than 60 mg/dL or higher than 240 mg/dL, contact the patient's healthcare provider.

Limitations:

- An abnormally high or low red blood cell count (hematocrit level over 60% or below 20%) may produce inaccurate results.
- Inaccurate results may occur in severely hypotensive (having low blood pressure) individuals or patients in shock. Inaccurate low results may occur for individuals experiencing a hyperglycemic hypotensive state, with or without ketosis. Critically ill patients should not be tested with the Assure® Prism multi Blood Glucose Monitoring System.
- Severe dehydration (excessive water loss) may cause falsely low results. If you believe you are suffering from severe dehydration, consult your physician immediately.
- There is no effect from altitudes of up to 10,000 ft (3,000 m) above sea level.
- Interferences: Acetaminophen, ascorbic acid (vitamin C), uric acid and other reducing substances (when occurring in normal blood or normal therapeutic concentrations) do not significantly affect results. However, abnormally high concentrations in blood may cause inaccurate high results.
- Blood with a high concentration of dissolved oxygen may lower the test result.
- Discard used test strips properly in a container for sharp objects.
- Not for neonatal use and not for screening or diagnosis of diabetes.
- For over the counter use.

METER AND TEST STRIP PERFORMANCE CHECK

The Assure® Prism Control Solutions (Level 1 and 2) contain fixed amounts of glucose and are used for checking whether the test strips and the meter are working together properly. Run a check when you:

- Want to practice the test procedure using the control solution instead of blood
- Use a new vial of test strips or open a new box of individually wrapped test strips
- Open a new vial of test strips or open a new box of individually wrapped test strips
- Have symptoms that are inconsistent with your blood glucose test results
- Believe your test results are not accurate
- Suspect your meter and test strips are not performing properly
- Drop or damage the meter

If your control solution test results do not fall within the range printed on the test strip vial or individually wrapped test strip box, repeat the test. Out of range results may be due to one or more of the following factors:

- Error in performing the test
 - Expired or contaminated control solution
 - Expired or damaged test strip
 - Failure to shake the control solution bottle
 - Failure to discard the first drop of control solution and wipe the top of the bottle cap clean
 - Failure to continue to fall outside the range printed on the vial or individually wrapped test strip box
- The Assure® Prism multi test strips and the meter may not be working properly. If so, do not use your system and contact Customer Service at 800.818.8877, 24 hours a day, 7 days a week, USA and Canada.

CHEMICAL COMPOSITION

Each Assure® Prism multi test strip contains the following reagents:
 Glucose oxidase (*Aspergillus* sp.), 2.7 units
 Hexaminechromium(III) chloride, 45.7 µg
 Other ingredients: 1.6 µg

INDIVIDUALLY WRAPPED TEST STRIP

When using individually wrapped test strips,

- Check the exp date on the rear side
- Tear off the individual wrap on the notch, take the test strip out and use it immediately

Note: The control solution ranges for the individually wrapped test strips are printed on the test strip box.

PERFORMANCE CHARACTERISTICS

The performance of the Assure® Prism multi Blood Glucose Test Strips has been evaluated in laboratory and clinical tests.

Measurement Range

The measurement range of the Assure® Prism multi Blood Glucose Monitoring System is 20 to 600 mg/dL.

Accuracy

The Assure® Prism multi Blood Glucose Monitoring System is calibrated to yield results equivalent to plasma glucose concentrations. The accuracy of the system was assessed by comparing blood glucose results obtained by patients with those obtained using a standard 20 µL glucose test strip as a laboratory instrument. The results below were obtained by diabetic patients at clinic centers.

	Obtained by healthcare professionals	Obtained by lay users
Slope	1.017	1.022
Y-intercept	-7.39 mg/dL	-8.31 mg/dL
Correlation coefficient (r)	0.992	0.992
Number of sample	122	118
Range tested	40-577 mg/dL	98-577 mg/dL

Accuracy results for glucose concentration < 75 mg/dL

Within ± 5 mg/dL	Within ± 10 mg/dL	Within ± 15 mg/dL
11/11 (100%)	11/11 (100%)	11/11 (100%)

Accuracy results for glucose concentration ≥ 75 mg/dL

Within ± 5%	Within ± 10%	Within ± 15%	Within ± 20%
47/111 (42%)	89/111 (80%)	109/111 (98%)	111/111 (100%)

This study shows that the system compares well with a laboratory method.

Alternative Site Testing Evaluation

- Comparison of various A1C with respect to the results of YSI measurements: Alternative site test results for glucose concentration < 75 mg/dL

	Within ± 5 mg/dL	Within ± 10 mg/dL	Within ± 15 mg/dL
Fingertip	2/2 (100%)	2/2 (100%)	2/2 (100%)
Forearm	2/2 (100%)	2/2 (100%)	2/2 (100%)
Palm	1/2 (50.0%)	2/2 (100%)	2/2 (100%)
Thigh	1/2 (50.0%)	2/2 (100%)	2/2 (100%)
Calf	1/2 (50.0%)	2/2 (100%)	2/2 (100%)

Alternative site test results for glucose concentration ≥ 75 mg/dL

	Within ± 5%	Within ± 10%	Within ± 15%	Within ± 20%
Fingertip	34/56 (60.7%)	51/56 (91.1%)	55/56 (98.2%)	56/56 (100%)
Forearm	32/56 (57.1%)	52/56 (92.9%)	56/56 (100%)	56/56 (100%)
Palm	21/56 (37.5%)	52/56 (92.9%)	54/56 (96.4%)	56/56 (100%)
Thigh	21/56 (37.5%)	44/56 (78.6%)	54/56 (96.4%)	56/56 (100%)
Calf	24/56 (42.9%)	43/56 (76.8%)	53/56 (94.6%)	56/56 (100%)

Precision

Precision studies were performed in a laboratory.

Within Run Precision	
Blood avg.	41.4 mg/dL SD = 1.8 mg/dL
Blood avg.	78.6 mg/dL SD = 2.8 mg/dL
Blood avg.	129.8 mg/dL CV = 2.6%
Blood avg.	201.9 mg/dL CV = 3.1%
Blood avg.	348.6 mg/dL CV = 2.7%

Total Precision	
Control avg.	36.2 mg/dL SD = 1.3 mg/dL
Control avg.	117.0 mg/dL CV = 2.3%
Control avg.	321.8 mg/dL CV = 2.4%

This study shows that there could be variation of up to 3.1%.

References

1. American Diabetes Association. "Standards of Medical Care in Diabetes - 2015." *Diabetes Care*. January 2015; 38(1):S10-S81.

For questions / comments, contact Customer Service at 800.818.8877, 24 hours a day, 7 days a week, USA and Canada.

In case of emergency, consult the patient's healthcare provider or emergency medical response.

Manufactured for:
ARKRAY USA, INC.
 Minneapolis, MN 55439 USA
www.arkrayusa.com

© 2015 ARKRAY USA, Inc.
 PA1511105
 PKCE0204-REUS 11/2015



Assure® Prism Control Solution

SECTION

B

IMPORTANT

Please read the following information and the User's Manual for the meter before using the Assure® Prism Control Solutions.

INTENDED USE

The Assure® Prism Control Solutions are red in color. The Assure® Prism Control Solutions are for use with the Assure® Prism multi meter and test strips to check that the meter and the test strips are working together properly and that you are performing the test correctly.

SUMMARY AND EXPLANATION

The Assure® Prism Control Solutions (Level 1 and 2) each contain a specific amount of glucose that is used to test the meter and test strips. The Assure® Prism Control Solutions are for self-testing outside the body (*In Vitro* diagnostic use). The control solution may be used to check the performance of the meter and test strip or your testing technique. The test results obtained should fall within the control solution range printed on the vial of test strips that you are using.

CAUTION

The control solution ranges printed on the test strip vial are for the Assure® Prism Control Solutions only. These ranges are used to check the meter and test strip performance.

These are not recommended ranges for blood glucose level.

Use Assure® Prism Control Solution when:

- You want to practice the test procedure, without using blood
- You use the Assure® Prism multi meter for the first time
- You begin using a new vial of test strips
- You suspect that the meter or the test strips are not working properly
- You think your test results are inaccurate or they do not reflect how the patient feels
- You drop the meter

STORAGE AND HANDLING

Store the Assure® Prism Control Solution at temperatures between 46°F-86°F/8°C-30°C, tightly capped in the vial. It must be kept at room temperature (68°F-77°F/20°C-25°C) at least 30 minutes before testing to obtain correct results. Do not refrigerate or freeze the control solution.

WARNING AND PRECAUTIONS

- The Assure® Prism Control Solution is for *In Vitro* diagnostic use only.
- Use the Assure® Prism Control Solution only with the Assure® Prism multi meter and test strips.
- Do not swallow or inject the control solution.
- Check the expiration date shown on the vial label. Do not use if expired.
- Do not use beyond 3 months (90 days) after opening the vial. Record the discard date (3 months from the day the vial was opened) on the vial label.
- If the control test results are outside the range printed on the test strip vial, do not use the system to test blood until you have resolved the problem.
- Control Solution, meter and test strips must be stored at room temperature (68°F-77°F/20°C-25°C) at least 30 minutes before testing.
- The control solution contains a dye that may stain clothes.

TEST PROCEDURE

Step 1

Insert the test strip into the meter's port. The applied blood symbol will appear on the display after 3 seconds.

Step 2

Shake the control solution vial well before using.

Step 3

Discard one or two drops of control solution. Apply one drop of control solution to the top of the control solution cap.

Step 4

Touch the narrow edge of the test strip to the control solution until the meter beeps.

Step 5

Test results appear after the meter counts down to 1. Compare the control solution result with the appropriate control solution range printed on the test strip vial. If the result falls within the specified range, you are ready to use the meter and test strips to test blood.

Step 6

Remove the used test strip from the meter's test strip port. The meter will turn off automatically. Please read the User's Manual for further information before using the Assure® Prism Control Solution.

INTERPRETATION OF OUT-OF-RANGE RESULTS

If the control solution test results do not fall within the expected range printed on the test strip vial, repeat the test. Out-of-range results may be due to one or more of the following factors:

- An error in the way you perform the test
- Expired or contaminated control solution
- Damaged or outdated test strips
- A problem with the meter
- Control solution is too warm or too cold
- Failure to shake the control solution vial vigorously or to wipe the top of cap clean

IMPORTANT

If the control solution test results continue to fall outside the range printed on the test strip vial, the system may not be working properly. Do not use the system. If you are unable to resolve the problem, contact customer service at 800.818.8877, 24 hours a day, 7 days a week, USA and Canada.

CHEMICAL COMPOSITION

Each 4 mL vial of Assure® Prism Control Solution contains:

- D-Glucose
- Preservative
- FD&C red dye

For questions / comments, contact Customer Service at 800.818.8877, 24 hours a day, 7 days a week, USA and Canada. In case of emergency, consult the patient's healthcare provider or emergency medical response.

Manufactured for
ARKRAY USA, INC.
Minneapolis, MN 55439 USA
www.arkrayusa.com

© ARKRAY USA, Inc.
P/N 5122-03
PGK7E0006 REV3 04/2015

Regulatory Review and Guidelines for QA/QC Protocols

COMPETENCY CHECKLIST

	Joint Commission on Accreditation of Healthcare Organizations (JCAHO)	Clinical and Laboratory Standards Institute (CLSI) (Formerly NCCLS)	Clinical Laboratory Improvement Amendments (CLIA)
Personnel/Training	<ul style="list-style-type: none"> • Staff members can describe or demonstrate their roles and responsibilities (HR.2.20). • Participate in ongoing in-services. • Education is documented (HR.2.30). • Competence to perform job responsibilities is assessed, demonstrated, and maintained (HR.3.10). 	<ul style="list-style-type: none"> • Formal training and written examination. 	<ul style="list-style-type: none"> • Follow manufacturer's instructions.
Quality Assurance	<ul style="list-style-type: none"> • Current and complete policies are available to the person performing the test. • Written policies and procedures for: specimen collection, identification, and required labeling; specimen preservation; instrument calibration; quality control and remedial action; equipment performance evaluation; test performance. 	<ul style="list-style-type: none"> • Follow manufacturer's instructions for calibration. • Written procedure manual. • Manual contains principles of operation, reagents/equipment, calibration, quality control, stepwise procedure, reporting results, procedure limitations, references, supplemental material, review and updates. 	<ul style="list-style-type: none"> • Follow manufacturer's instructions.
Quality Control	<ul style="list-style-type: none"> • Written quality control plan that specifies how procedures will be controlled. • At the least, perform as frequently as recommended by manufacturer. • Should include two levels of control solution. • At the least, quality control procedures are performed once each day on each instrument used for resident testing (PC.16.50). 	<ul style="list-style-type: none"> • On each day of use, two control solutions (Level 1 and 2) should be performed per instrument. • Prior to the first test of the day, each operator is to perform a quality control test. • Additional checks should be performed when: <ul style="list-style-type: none"> • A new bottle of strips is opened. • Each time a reagent lot is changed. • To ensure the strips and meter are functioning properly. 	<ul style="list-style-type: none"> • Follow manufacturer's instructions.
Linearity/Calibration	<ul style="list-style-type: none"> • Linearity not covered in the standards. 	<ul style="list-style-type: none"> • Initially and as specified by manufacturer or as required by government or accrediting bodies. 	<ul style="list-style-type: none"> • Follow manufacturer's instructions.
Proficiency Training	<ul style="list-style-type: none"> • Not specified. 	<ul style="list-style-type: none"> • Participate in program that meets accreditation, federal and state regulations. 	<ul style="list-style-type: none"> • Not specified.
Inspections	<ul style="list-style-type: none"> • Currently triennial (APP-5). 	<ul style="list-style-type: none"> • Not a certifying agency. 	<ul style="list-style-type: none"> • Not subject to routine survey. • Conducted only when authorized by the RO.

ARKRAY provides this checklist as a guideline only. These guidelines are subject to change by the regulating body at any time. Utilize this checklist in accordance with your facility's policy.

ACCURACY AND PRECISION STUDIES

Performance Characteristics

The performance of the Assure Prism multi Blood Glucose Monitoring System has been evaluated in laboratory and clinical tests.

ACCURACY: The Assure Prism multi Blood Glucose Monitoring System is calibrated to yield results equivalent to plasma glucose concentrations. The accuracy of the Assure Prism multi Blood Glucose Monitoring System was tested by comparing blood glucose results obtained by patients with those obtained using a YSI Model 2300 Glucose Analyzer, a lab instrument.

The results below were obtained by diabetic patients at clinic centers.

	Obtained by Healthcare Professionals	Obtained by Lay Users
Slope	1.017	1.022
Y-intercept	-7.39 mg/dL	-8.31 mg/dL
Correlation coefficient(r)	0.992	0.992
Number of samples	122	118
Range tested	40-577 mg/dL	58-577 mg/dL

Accuracy

Results for glucose concentration < 75 mg/dL

Within ± 5 mg/dL	Within ± 10 mg/dL	Within ± 15 mg/dL
11/11 (100%)	11/11 (100%)	11/11 (100%)

Results for glucose concentration ≥ 75 mg/dL

Within ± 5%	Within ± 10%	Within ± 15%	Within ± 20%
47/111 (42%)	89/111 (80%)	109/111 (98%)	111/111 (100%)

Precision

Studies were performed in a laboratory using the Assure Prism multi Blood Glucose Monitoring System.

Within Run Precision

Blood avg.*	41.4 mg/dL	SD = 1.8 mg/dL
Blood avg.*	79.6 mg/dL	SD = 2.8 mg/dL
Blood avg.*	129.8 mg/dL	CV = 2.6%
Blood avg.*	201.9 mg/dL	CV = 3.1%
Blood avg.*	349.6 mg/dL	CV = 2.7%

Total Precision

Control avg.*	36.2 mg/dL	SD = 1.3 mg/dL
Control avg.*	117.0 mg/dL	CV = 2.3%
Control avg.*	321.8 mg/dL	CV = 2.4%

*This study shows that there could be variation of up to 3.5%.

ALTERNATIVE SITE TESTING EVALUATION

Comparison of results using various alternative site testing with the results of YSI measurements.

Alternative site test results for glucose concentration < 75 mg/dL			
	Within \pm 5 mg/dL	Within \pm 10 mg/dL	Within \pm 15 mg/dL
Fingertip	2/2 (100%)	2/2 (100%)	2/2 (100%)
Forearm	2/2 (100%)	2/2 (100%)	2/2 (100%)
Palm	1/2 (50.0%)	2/2 (100%)	2/2 (100%)
Thigh	1/2 (50.0%)	2/2 (100%)	2/2 (100%)
Calf	1/2 (50.0%)	2/2 (100%)	2/2 (100%)

Alternative site test results for glucose concentration \geq 75 mg/dL				
	Within \pm 5 mg/dL	Within \pm 10 mg/dL	Within \pm 15 mg/dL	Within \pm 20%
Fingertip	34/56 (60.7%)	51/56 (91.1%)	55/56 (98.2%)	56/56 (100%)
Forearm	32/56 (57.1%)	52/56 (92.9%)	56/56 (100%)	56/56 (100%)
Palm	31/56 (55.4%)	52/56 (92.9%)	54/56 (96.4%)	56/56 (100%)
Thigh	27/56 (48.2%)	44/56 (78.6%)	54/56 (96.4%)	56/56 (100%)
Calf	24/56 (42.9%)	43/56 (76.8%)	53/56 (94.6%)	56/56 (100%)

Addendums

PRODUCT ORDERING

Product Description	ARKRAY Product Code #	NDC #
Assure Prism multi Meter Blood Glucose Meter	530001	08317-5300-01
Assure Prism multi Test Strips 50 count	530050	08317-5300-50
Assure Prism multi Test Strips 100 count	530100	08317-5301-01
Assure Prism multi Test Strips – Foil-wrapped 50 count	532050	08317-5320-50
Assure Prism Control Solution – Control 1 and 2	530006	08317-5300-06

SECTION

D

WARRANTY

Manufacturer's Warranty

ARKRAY USA, Inc. warrants that the Assure Prism multi Blood Glucose Monitoring System shall be free of defects in material and workmanship in normal use for a period of three (3) years. The meter must have been subjected to normal use. The warranty does not cover improper handling, tampering, use, or service of the meter. Any claim must be made within the warranty period.

The ARKRAY USA, Inc. company will, at its discretion, repair or replace a defective meter or meter part that is covered by this warranty. As a matter of warranty policy, ARKRAY USA, Inc. will not reimburse the consumer's purchase price.

Obtaining Warranty Service

To obtain warranty service, you must return the defective meter or meter part along with proof of purchase to ARKRAY USA, Inc.

Do not send your meter or meter parts to ARKRAY without first calling to get approval to do so. Customer Service may be reached at **800.818.8877**, 24 hours a day, 7 days a week, USA and Canada only.

Name of facility: _____

IN-SERVICE TRAINING AND CERTIFICATION

ASSURE® PRISM MULTI BLOOD GLUCOSE MONITORING SYSTEM

Certified Instructor: Before signing checklist, the trainee must meet objectives listed below.

1. Familiarization with components of the Assure® Prism multi Blood Glucose Monitoring System:

Meter <input type="checkbox"/> Features (strip release button, test strip port, etc.) <input type="checkbox"/> Serial Number <input type="checkbox"/> Storage <input type="checkbox"/> Cleaning and Disinfecting <input type="checkbox"/> Toll-free Customer Service Number	Test Strips <input type="checkbox"/> Lot Number <input type="checkbox"/> Expiration Date <input type="checkbox"/> Storage <input type="checkbox"/> Control Solution Range <input type="checkbox"/> Proper Strip Insertion <input type="checkbox"/> Handling	<table border="1"> <tr> <td data-bbox="1081 638 1427 842"> Control Solutions <input type="checkbox"/> Expiration Date <input type="checkbox"/> Acceptable Range <input type="checkbox"/> Test Procedure </td> </tr> <tr> <td data-bbox="1081 842 1427 991"> Safety Lancets <input type="checkbox"/> Usage / Activation* <input type="checkbox"/> Disposal </td> </tr> </table>	Control Solutions <input type="checkbox"/> Expiration Date <input type="checkbox"/> Acceptable Range <input type="checkbox"/> Test Procedure	Safety Lancets <input type="checkbox"/> Usage / Activation* <input type="checkbox"/> Disposal
Control Solutions <input type="checkbox"/> Expiration Date <input type="checkbox"/> Acceptable Range <input type="checkbox"/> Test Procedure				
Safety Lancets <input type="checkbox"/> Usage / Activation* <input type="checkbox"/> Disposal				

*Actual blood sampling is not required.

2. Describe/Demonstrate:

Initial Meter Set-Up Options <input type="checkbox"/> Audible Beep <input type="checkbox"/> Time Format <input type="checkbox"/> Date Format
--

Instructor Name (Print)

Operator/Trainee Name (Print)

Date

Instructor Name (Signature)

Operator/Trainee Name (Signature)

Date

Operator Certified Yes No

Next In-service (Month/Year)

ARKRAY USA, INC.
 Minneapolis, MN 55439 USA
 TEL 800.818.8877
 FAX 952.646.3110
 www.arkrayusa.com

Name of facility: _____

COMPETENCY CHECKLIST

ASSURE® PRISM MULTI BLOOD GLUCOSE MONITORING SYSTEM

Certified Operator _____

Date _____

Certified Trainer _____

The Certified Trainer should observe the Operator performing the following tasks:

- | | | |
|---|------------------------------|-----------------------------|
| 1. Follow facility protocol for quality control testing. | <input type="checkbox"/> YES | <input type="checkbox"/> NO |
| 2. Change battery. | <input type="checkbox"/> YES | <input type="checkbox"/> NO |
| 3. Select and prepare the fingerstick site correctly. | <input type="checkbox"/> YES | <input type="checkbox"/> NO |
| 4. Use lancet/lancing device correctly.* | <input type="checkbox"/> YES | <input type="checkbox"/> NO |
| 5. Dispose of lancet correctly. | <input type="checkbox"/> YES | <input type="checkbox"/> NO |
| 6. Insert test strip into meter correctly. | <input type="checkbox"/> YES | <input type="checkbox"/> NO |
| 7. Apply blood to sample-application tip correctly. | <input type="checkbox"/> YES | <input type="checkbox"/> NO |
| 8. Record result correctly. | <input type="checkbox"/> YES | <input type="checkbox"/> NO |
| 9. Identify when to repeat test or check result with a laboratory test. | <input type="checkbox"/> YES | <input type="checkbox"/> NO |
| 10. Perform control solution test correctly. | <input type="checkbox"/> YES | <input type="checkbox"/> NO |
| 11. Saving control solution test correctly. | <input type="checkbox"/> YES | <input type="checkbox"/> NO |
| 12. Clean/disinfect meter correctly. | <input type="checkbox"/> YES | <input type="checkbox"/> NO |

* Actual blood sampling is not required.

Did the Operator perform each task correctly? YES NO

If yes, the Operator is now certified to use the Assure® Prism multi Blood Glucose Monitoring System. If no, retrain and perform tasks again.

ARKRAY USA, INC.
Minneapolis, MN 55439 USA
TEL 800.818.8877
FAX 952.646.3110
www.arkrayusa.com

SECTION

E

Name of facility: _____

SELF-TEST

ASSURE® PRISM MULTI BLOOD GLUCOSE MONITORING SYSTEM

The following is a multiple choice self-test that is designed to test your proficiency in using the Assure® Prism multi Blood Glucose Monitoring System. Answer the questions by circling the letter of the statement that is CORRECT. Check your answers against the correct answers, which are located at the end of the test. More than one answer may be acceptable on some questions.

If you respond incorrectly to any of the questions, make sure you study the section or talk to your certified instructor.

1. The Assure® Prism multi Blood Glucose Meter stores up to _____ tests in the memory.

- a. 200
- b. 50
- c. 500
- d. 10

2. The Assure® Prism multi Blood Glucose Test Strips

- a. May be reused.
- b. Can be used with other meters besides the Assure Prism multi Blood Glucose Monitoring System.
- c. Are sensitive to light, moisture and humidity.
- d. Has a confirmation window used to determine if a sufficient amount of blood sample has been applied.

3. When obtaining a blood sample

- a. You should not wash the patient's hand.
- b. Hang the patient's arm down below their heart for 10 to 15 seconds to increase blood flow.
- c. You should lance the side of fingertip.
- d. You should use the same site selection of the fingertip each time.

4. When performing a test with control solutions

- a. Any brand of control solutions may be used.
- b. The test strip must be in the meter before solutions are applied.
- c. A clean tissue or cloth may be used to wipe the first 1 or 2 drops of control solution from the tip of the cap.
- d. Compare the result displayed on the meter to the range printed on the test strip vial.

5. Assure® Prism Control Solutions

- a. Are used for cleaning the meter.
- b. Are used to verify that the test strips are reacting properly.
- c. Are good for 90 days after opening.
- d. Should not be used if strips have been exposed to extremes in temperature, light, or humidity.

6. When applying blood to the Assure Prism multi Blood Glucose Test Strips

- a. Smear the blood sample.
- b. Apply it to the narrow end of the test strip until the meter beeps.
- c. The test result will appear after the meter counts down from 5 to 1.
- d. You may apply a second blood drop if meter does not start after adding the first drop.

7. The Assure Prism multi Blood Glucose Meter can be used with

- a. Whole blood.
- b. Serum or plasma.
- c. Neonatal blood samples.
- d. Venous blood.

8. The Assure Prism multi Blood Glucose Monitoring System should be cleaned and disinfected between patient tests to avoid cross-contamination?

- True False

9. Nurses who use the Assure Prism multi Blood Glucose Monitoring System to test patients should

- a. Wear gloves when cleaning the meter.
- b. Test the meter with two control solutions.
- c. Not rely on the memory or average features as they are not related to a specific patient.
- d. Use a safety lancet, such as the Assure® Lance, to obtain a patient's blood sample.

10. The Assure Prism multi Blood Glucose Meter uses four 3.0V lithium batteries

- True False

Name: _____

Date: _____

Score: _____

ARKRAY USA, INC.
Minneapolis, MN 55439 USA
TEL 800.818.8877
FAX 952.646.3110
www.arkrayusa.com

SELF-TEST

ASSURE® PRISM MULTI BLOOD GLUCOSE MONITORING SYSTEM

Answer Key

1. c	6. b, c
2. c, d	7. a
3. b, c	8. True
4. b, c, d	9. a, b, c, d
5. b, c, d	10. False

SECTION

E

Manufactured for
ARKRAY USA, INC.
Minneapolis, MN 55439 USA
TEL 800.818.8877
www.arkrayusa.com

Assure is a trademark of ARKRAY, Inc.
Clorox is a trademark of The Clorox Company.
PDI and Sani-Cloth are trademarks of
Professional Disposables International, Inc.
CaliWipe1 is a trademark of Metrex.

©ARKRAY USA, Inc. All Rights Reserved.

6570-04 Rev. 02/16

Manufactured for
ARKRAY USA, INC.
Minneapolis, MN 55439 USA
TEL 800.818.8877
www.arkrayusa.com

Customer Service, 800.818.8877
24 hours a day, 7 days a week, USA and Canada.

©ARKRAY USA, Inc. All Rights Reserved.

6570-04 Rev. 02/16